



S.I. Storey

LUMBER COMPANY, INC.
Since 1920



LotGuard™

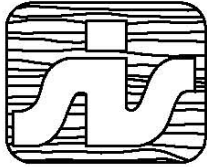
Designed for use around parking lots or along driveways, LotGuard.™ is the logical solution for architects and land planners where an aesthetic barrier is needed. If impacted, it's bumper height post and rail design is less damaging to vehicles than typical bollards.



Osmose® Wood Products
Licensed Manufacturer
Since 1955

285 Sike Storey Rd. • P.O. Box 99
Armuchee, GA 30105
Phone: 888-934-1605 Fax: 706-235-8132

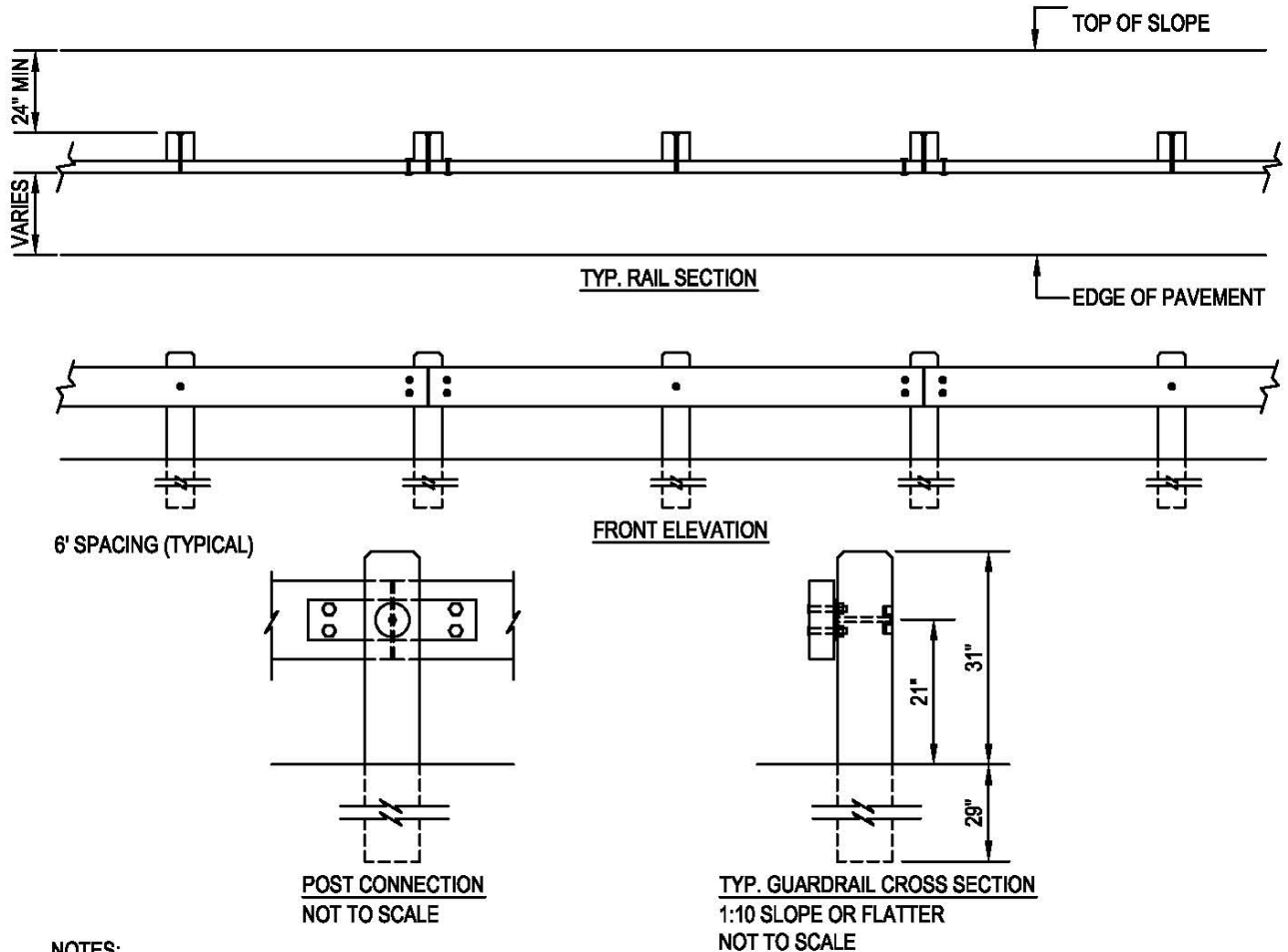
Southern Pine Inspection
Bureau Member
Since 1943



S.I. Storey

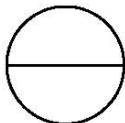
LUMBER COMPANY, INC.

S.I. STOREY LUMBER CO., INC.
285 SIKE STOREY RD NW
P.O. BOX 99
ARMUCHEE, GA 30105-0099
TOLL FREE: (888) 934-1605
PHONE: (706) 234-1605
FAX: (706) 235-8132
www.timbarrier.com



NOTES:

1. INSTALLATION TO BE COMPLETED IN ACCORDANCE WITH MANUFACTURER'S SPECIFICATIONS.
2. DO NOT SCALE DRAWINGS.
3. INCREASE POST LENGTH TO 6' OR 7' IF BACK OF POST IS CLOSER THAN 24" TO TOP OF SLOPE OR WHEN LOCATED IN CLIMATES WHERE FROST HEAVING MAY OCCUR.
4. DRIVE POSTS OR AUGER, BACKFILL WITH NATIVE SOIL AND COMPACT EVERY 12".
5. ALL TIMBER #1 S4S SOUTHERN PINE, PRESSURE TREATED: AWPA-C14, WOOD FOR USE IN HWY. CONSTR.
6. TYP. POST: 6" X 8" X 5' - TYP. RAIL: 3" X 12" X 11' 11 1/2"; FOR RADIUS SECTIONS SPECIFY 3" X 12" X 5' 11-1/2"
7. FASTENERS: ASTM A307; A242; F436 TYPE 3; A563 DH3.
8. TIMBARRIER™ SPLICE PLATE & PLATE WASHER ASTM-A588.
9. UNDER EACH BOLT HEAD ON FACE OF RAIL INSTALL ONE 7/8" WASHER.
10. REFER TO DRAWINGS 651-001b FOR TERMINAL DETAILS
11. CONTRACTORS NOTE: FOR PRODUCT AND COMPANY INFORMATION VISIT www.CADdetails.com/info REFERENCE NUMBER 651-001.



TIMBARRIER™

LOTGUARD™, PARKING LOT AND DRIVEWAY APPLICATIONS (10 MPH MAX.)